

Behavioral Health Series®



BHW Trim



The NEW Standard in Healthcare

Today, healthcare facilities are transforming the patient experience, combining safety and reliability with aesthetics. SARGENT's innovative BHW trim integrates the lever and escutcheon, creating a superior design that is safer, easy to use and aesthetically pleasing. Its streamlined look and feel brings an elegant style to the most demanding environments and fits perfectly in modern behavioral health areas.



Features

- Aesthetic, modern design with integrated lever and escutcheon
- Uses the ANSI/BHMA Grade 1 8200 mortise lock
- Available in 37 functions including Asylum/Institutional (ANSI F30), Institutional Privacy (ANSI F26) and Privacy (ANSI F22, F19 and F02) as well as electrified options
- Uses standard mortise prep, with only 2 additional holes
- Stainless Steel finishes (629, 630) standard; MicroShield® antimicrobial coating optional
- Matching behavioral health thumbturn available
- UL Listed for use with Fire Rated doors
- ADA Compliant
- U.S. Patent Number: D690,577

Applications

- Behavioral Health Units
- Patient Room Doors
- De-escalation Rooms
- Psychiatric Facilities
- Assisted Living Facilities



MicroShield®
As part of their promise to provide innovative solutions to their customers, certain ASSA ABLOY Group brands offer the MicroShield® technology, a silver-based antimicrobial coating designed to inhibit the growth of bacteria.
MicroShield® is a registered trademark of Yale Security Inc., an ASSA ABLOY Group company.

NOTE: Although these products are better designed for behavioral health applications than traditional trim, they do not eliminate the risk that an object can be affixed to, or around them.

ASSA ABLOY is the global leader in door opening solutions, dedicated to satisfying end-user needs for security, safety and convenience

SARGENT Manufacturing Company
800-727-5477 • www.sargentlock.com

Benefits

- Beautiful: tapered surfaces and escutcheon shape lend a modern design aesthetic to healthcare facilities
- Strong and durable: lock exceeds ANSI/BHMA Grade 1 requirements to withstand abusive environments
- Versatile: 37 functions, including electrified and behavioral health specific; can be used on many opening types
- Minimizes risk: helps contribute to patient safety with unique design; available with MicroShield® antimicrobial coating
- Easy to use: intuitive operation of lever provides easy access for staff and patients

Other Products in the Behavioral Health Series

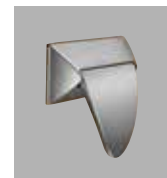
- BHL Trim for the 8200 Mortise Lock
- BHD Knob for use with 7800 Series and 9200 Series
- Push/Pull Paddle Trim (ALP) for the 8200 Mortise Lock and HP Bored Lock



BHL Trim



BHD Knob



ALP Trim